

Snowy Friends

by Nancy Mink

Throw Quilt: 53" x 68"



Wilmington Prints: A World of Possibilities

www.wilmingtonprints.com

Wall/Throw Quilt: 48" x 68"

Snowy Friends

Please read all instructions carefully AND identify all fabrics before beginning.

All instructions include a 1/4" seam allowance and strips are cut selvege to selvege, unless stated otherwise.

1. Cut the following for Wall/Throw Quilt:

Fabric A - PLEASE NOTE: Panels do not always print the size intended. For this pattern, the panel has a coping border added then trimmed so the panel will fit the quilt correctly.

Fussy cut 1/4" beyond outside edges of panel to approximately 23" x 42"

Fabric B - Cut (6) 3" strips, sewn together end to end and cut into (2) 3" x 63-1/2" and (2) 3" x 48-1/2" borders

Fabric C - Cut (7) 2-1/2" strips (binding)

Fabric D - Cut (2) 2-7/8" strips, subcut (28) 2-7/8" squares then cut in half diagonally for 56 triangles

Cut (3) 2-1/2" strips, sewn together end to end and cut into (2) 2-1/2" x 46-1/2" borders

Cut (4) 2-1/2" strips, subcut (2) 2-1/2" x 30-1/2" borders and (40) 2-1/2" squares

Fabric E - Cut (4) 2-7/8" strips, subcut (54) 2-7/8" squares then cut in half diagonally for 108 triangles

Cut (3) 2-1/2" strips, subcut (36) 2-1/2" squares

Fabric F - Cut (5) 2" strips, sewn together end to end and cut into (2) 2" x 60-1/2" and (2) 2" x 43-1/2" borders

Fabric G - Cut (2) 3-1/4" strips, subcut (2) 3-1/4" x 28" borders and (9) 2-1/2" squares

Cut (2) 2-7/8" strips, subcut (26) 2-7/8" squares, then cut in half diagonally for 52 triangles

Cut (2) 2-3/4" strips

Cut (2) 2-1/2" strips, subcut (32) 2-1/2" squares

2. Piecing Order for Wall/Throw Quilt:

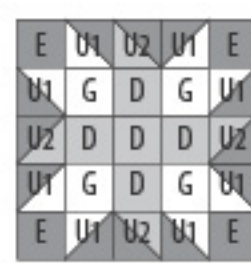
1. Sew 1 each 2-7/8" **Fabrics E** and **G** triangles together along their long edges. Make a total of 52 Unit 1 (2-1/2" square unfinished). In the same manner, make 56 Unit 2 with 2-7/8" **Fabrics D** and **E** triangles



2. Arrange **Fabrics D, E,** and **G** 2-1/2" squares and Units 1 (U1) and 2 (U2) in 5 rows as shown. Stitch into rows. Sew rows together. Make a total of 5 **Block 1** (10-1/2" square unfinished). In the same manner, make 4 **Block 2** using squares and units as shown.



Block 1 - Make 5



Block 2 - Make 4

3. Refer to Wall/Throw Quilt Layout (Page 2) for arrangement and placement of panel, strips, borders, and blocks.

4. Stitch **Fabric G** 2-3/4" strips to sides of the **Fabric A** panel. Trim strip ends even. Add 3-1/4" x 28" **Fabric G** strips to top and bottom of panel. **Trim bordered panel to 26-1/2" x 46-1/2" (unfinished).**

5. Sew 2-1/2" x 46-1/2" **Fabric D** borders to right and left sides of bordered panel. Add 2-1/2" x 30-1/2" **Fabric D** borders to top and bottom of bordered panel.

6. Arrange 3 **Block 1** and 2 **Block 2** on right side of bordered panel. Sew into vertical row (10-1/2" x 50-1/2" unfinished). Sew to right side of bordered panel. Arrange 2 each **Blocks 1** and **2** on bottom of quilt. Sew into a horizontal row (10-1/2" x 40-1/2" unfinished). Sew to bottom of quilt.

Snowy Friends

7. Sew 2" x 60-1/2" **Fabric F** borders to right and left sides of quilt. Add 2" x 43-1/2" **Fabric F** borders to top and bottom.

8. Sew 3" x 63-1/2" **Fabric B** borders to right and left sides of quilt. Add 3" x 48-1/2" **Fabric B** borders to top and bottom.

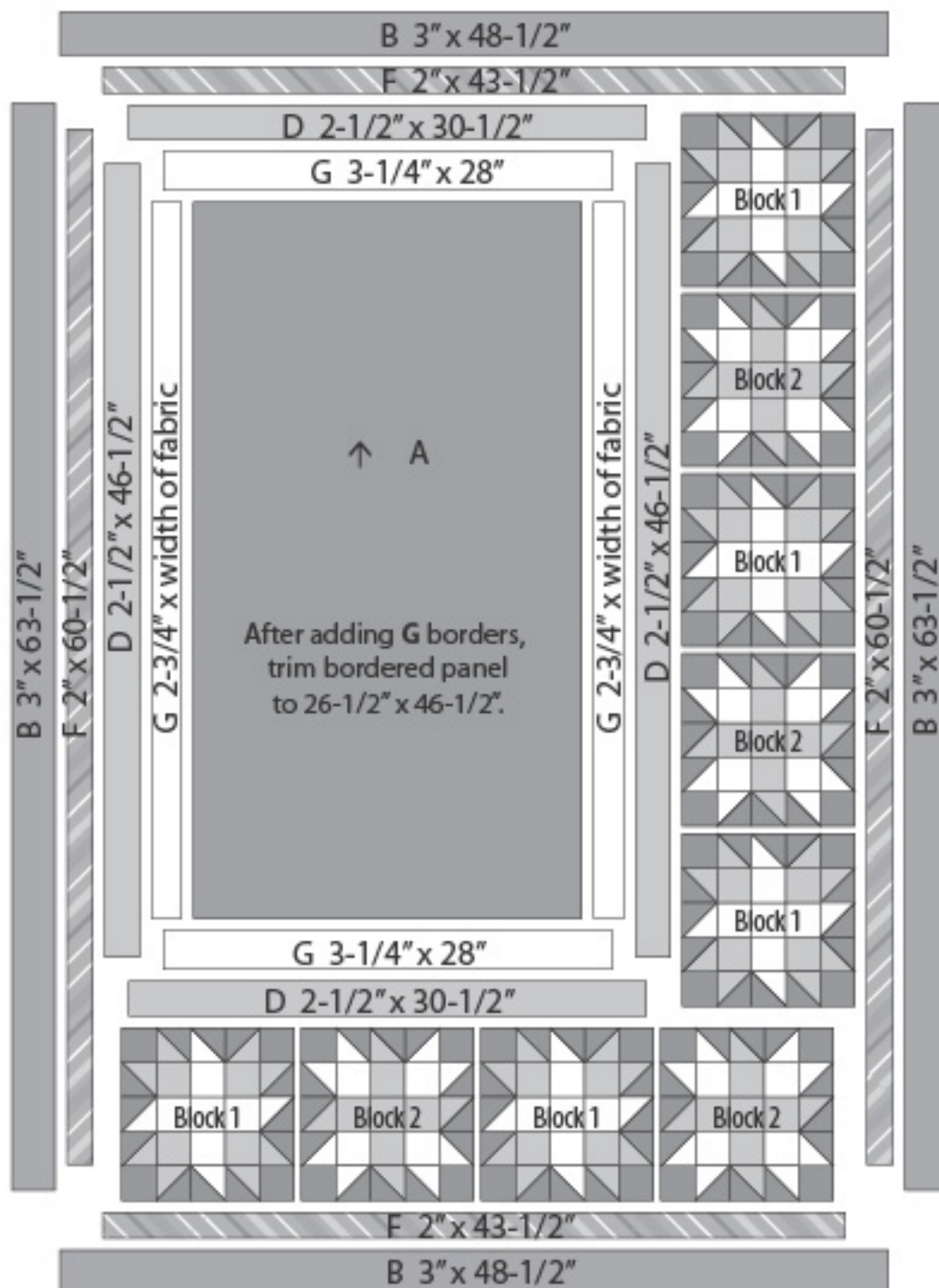
9. The quilt measures approximately 48-1/2" x 68-1/2" (unfinished). Make backing (**Fabric M**) approximately 8" larger than the top.

10. Layer and baste top, batting, and backing together. Quilt as desired. Attach binding (**Fabric C**) and enjoy!!

WALL/THROW QUILT LAYOUT

Arrow and stripe indicate orientation of directional prints.


Border measurements are the cut size.



Snowy Friends

3. Cut the following for Throw Quilt:

Fabric C - Cut (7) 2-1/2" strips (binding)


Fabric E - Cut (5) 2-1/8" strips, subcut (80) 2-1/8" squares [then cut in half  diagonally for 160 triangles] and (8) 1-3/4" squares

Cut (3) 2" strips, sewn together end to end and cut into (2) 2" x 51-1/2" borders

Cut (3) 1-3/4" strips, subcut (72) 1-3/4" squares

Fabric F - Cut (6) 2" strips, subcut (6) 2" x 39-1/2" borders

Cut (5) 1-1/2" strips, sewn together end to end and cut into (2) 1-1/2" x 51-1/2" and (2) 1-1/2" x 43-1/2" borders

Fabric G - Cut (3) 3" strips, subcut (20) 3" squares and (4) 2-1/8" squares
Cut (4) 2-1/8" strips, subcut (76) 2-1/8" squares, then cut all 2-1/8" squares in half  diagonally for 160 triangles

Fabric H - Referring to the quilt image, fussy cut strips, the length of fabric parallel to selvage: (2) 10-1/2" x 39-1/2" border stripe

Fabric I - Cut (1) 8-1/2" strip, subcut (1) 8-1/2" x 39-1/2" strip

Fabric J - Cut (6) 4" strips, sewn together end to end and cut into (2) 4" x 61-1/2" and (2) 4" x 53-1/2" borders

Fabric K - Cut (2) 5-1/2" strips, subcut (12) 4" x 5-1/2", (4) 3" x 5-1/2", and (8) 2-3/4" x 5-1/2" pieces

Fabric L - Cut (5) 2-1/2" strips, sewn together end to end and cut into (2) 2-1/2" x 47-1/2" and (2) 2-1/2" x 43-1/2" borders

4. Piecing Order for Throw Quilt:

1. Sew 1 each 2-1/8" **Fabrics E** and **G** triangles together along their long edges. Make a total of 160 Unit 1 (1-3/4" square unfinished).

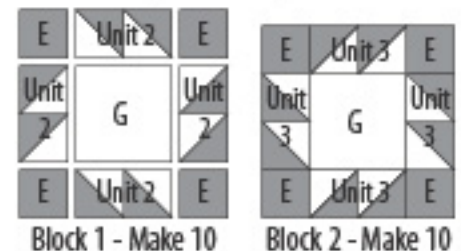


2. Sew 2 Unit 1 together as shown. Make a total of 40 each Unit 2 and 3 (1-3/4" x 3" unfinished).



3. Arrange 4 **Fabric E** 1-3/4" squares, 1 **Fabric G** 3" square, and 4 Unit 2 in 3 rows as shown. Stitch into rows. Sew rows together. Make a total of 10 **Block 1** (5-1/2" square unfinished). In the same

manner, make 10 **Block 2** using squares and units as shown.



4. Refer to Throw Quilt Layout (Page 4) for arrangement and placement of border stripe, strips, blocks, pieces, borders, and flat piping.

5. Arrange 4 **Fabric K** 2-3/4" x 5-1/2" pieces, 2 **Block 1**, and 3 **Block 2** in a row. Stitch into a horizontal row. Add **Fabric K** 3" x 5-1/2" pieces to both ends for second pieced row (5-1/2" x 39-1/2" unfinished).

6. Arrange 4 **Fabric K** 2-3/4" x 5-1/2" pieces, 3 **Block 1**, and 2 **Block 2** in a row. Stitch into a horizontal row. Add 2 **Fabric K** 3" x 5-1/2" pieces to both ends for third pieced row (5-1/2" x 39-1/2" unfinished).

7. Arrange second and third pieced rows, 6 **Fabric F** 2" x 39-1/2" strips, 2 **Fabric H** border stripes, and the **Fabric I** 8-1/2" x 39-1/2" strip in a vertical row. Stitch together into quilt center (39-1/2" x 47-1/2" unfinished).

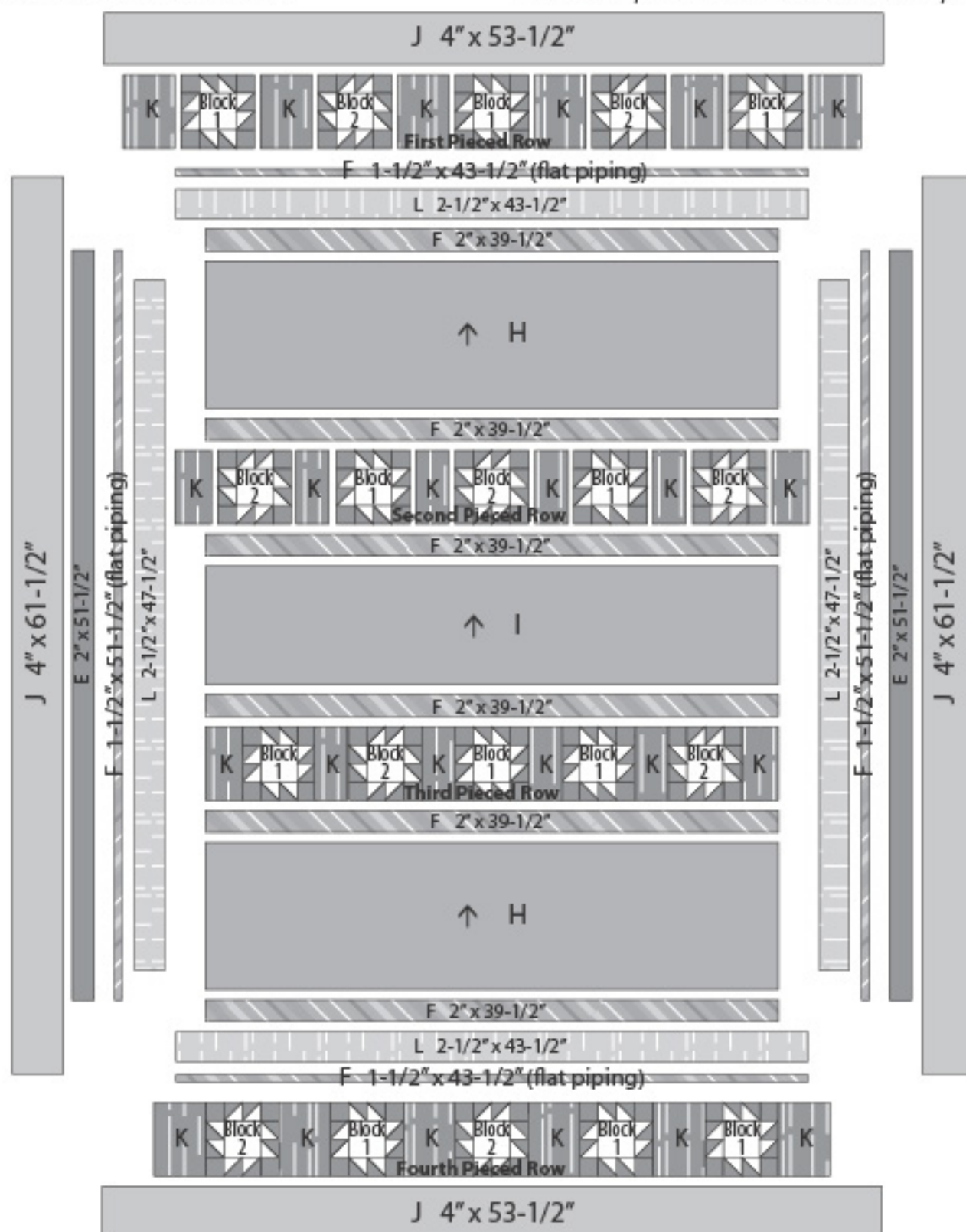
8. Sew **Fabric L** 2-1/2" x 47-1/2" borders to right and left sides of quilt center. Add **Fabric L** 2-1/2" x 43-1/2" borders to top and bottom of quilt center.

Snowy Friends

THROW QUILT LAYOUT

Border measurements are the cut size.

Arrows and stripes indicate orientation of directional prints.



Snowy Friends

9. Fold **Fabric F** 1-1/2" x 51-1/2" and 1-1/2" x 43-1/2" strips in half lengthwise, right side out, forming 3/4" wide flat piping strips.
10. Baste 3/4" x 51-1/2" **Fabric F** flat piping strips on top of sides of quilt, with raw edges even with raw edges of **Fabric L** border. Baste 3/4" x 43-1/2" **Fabric F** flat piping on top of top and bottom of quilt, with raw edges even with raw edges of **Fabric L** border.
11. Stitch **Fabric E** 2" x 51-1/2" borders to right and left sides of quilt.
12. Arrange 3 **Block 1**, 2 **Block 2**, and 6 **Fabric K** 4" x 5-1/2" pieces in a row. Stitch into row (5-1/2" x 46-1/2" unfinished) for first pieced row. Sew to top of quilt.
13. Arrange 2 **Block 1**, 3 **Block 2**, and 6 **Fabric K** 4" x 5-1/2" pieces in a row. Stitch into row (5-1/2" x 46-1/2" unfinished) for fourth pieced row. Sew to bottom of quilt.
14. Stitch **Fabric J** 4" x 61-1/2" borders to right and left sides of quilt. Add **Fabric J** 4" x 53-1/2" borders to top and bottom of quilt.
15. The quilt measures approximately 53-1/2" x 68-1/2" (unfinished). Make backing (**Fabric M**) approximately 8" larger than the top.
16. Layer and baste top, batting, and backing together. Quilt as desired. Attach binding (**Fabric C**) and enjoy!!

Q1665

Snowy Friends

by Nancy Mink

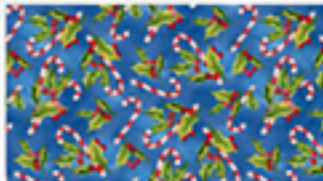
W=Wall/Throw Quilt, T= Throw Quilt



Fabric A (24" x 43")
Q1665-33811-417
W 2/3 yd. (1 panel)



Fabric B
Q1665-33815-471
W 5/8 yd.



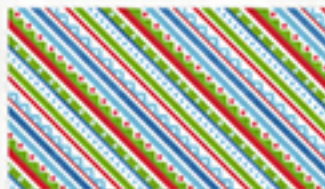
Fabric C (binding only)
Q1665-33816-473
W 5/8 yd. T 5/8 yd.



Fabric D
Q1665-33817-440
W 1 yd.



Fabric E
Q1665-33817-441
W 2/3 yd. T 7/8 yd.



Fabric F
Q1665-33819-713
W 3/8 yd. T 3/4 yd.



Fabric G (Essentials)
Q1080-31588-100
W 3/4 yd. T 5/8 yd.



Fabric H (24" repeat)
Q1665-33812-421
T 1-1/3 yds.



Fabric I
Q1665-33813-473
T 3/8 yd.



Fabric J
Q1665-33814-403
T 7/8 yd.



Fabric K
Q1665-33818-441
T 1/2 yd.



Fabric L
Q1665-33818-911
T 5/8 yd.



Fabric M (backing only)
Q1665-33814-913
W 3-1/4 yds. T 3-1/2 yds.



Wilmington Prints: A World of Possibilities

www.wilmingtonprints.com