

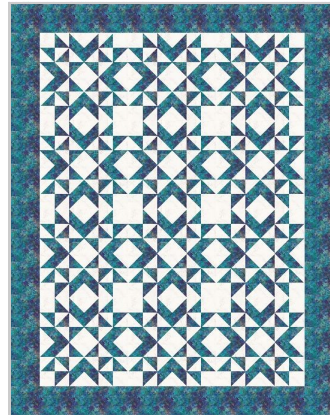
Thangles are a method of piecing half-square-triangle blocks (HSTs) using same sized straight grain strips. For example, if you want a 3" finished HST, you cut 3 1/2" strips of your two fabrics. No confusing math, no cutting odd sizes of fabric.

Just lay the two strips of fabric right sides together, pin a paper Thangle strip on top of the lighter fabric, sew on the dotted line and cut on the solid line. That's it! Press to the dark, remove the paper and you have perfect HST blocks. Complete illustrated

directions come with each package. The video can be seen at <http://thangles.com/video.html>

This block uses just 2 strips each of two different colors, 3-1/2" wide by the width of fabric. You will need (8) Thangle strips to make the (32) HST blocks, plus (4) 3-1/2" x 3-1/2" light squares cut from the leftover strips.

Since each package of 3" Thangles makes 200 HST blocks, you could actually make 12 Snowflake blocks from just one package of Thangles! The 66" x 84" quilt to the right uses 3 yds white and 4 yds blue, plus 1 package of 3" Thangles.



Snowflake Block



18" x 18" (using 3" Thangles)

Make this block as large or as small as you need using Thangles! Small blocks make great potholders or mug rugs—larger ones can be combined for table runners.



The Fine Print: You may make one copy of this pattern for your personal use only. Purchase of the pattern entitles you to make any number of items for your own use or gifts, and up to ten for sale. All rights reserved. Thank you! Questions or comments? Contact

Phoebemoondesigns@gmail.com



Phoebe Moon Designs

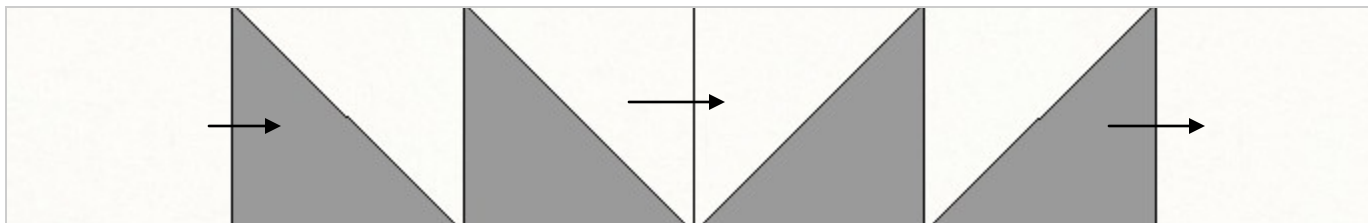
3637 Carman Rd

Schenectady NY 12303

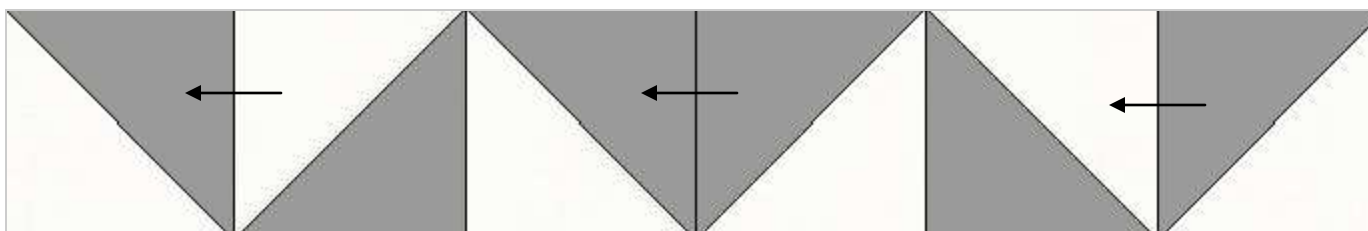
<http://phoebemoon.com>

Make (32) HST blocks using the directions on the previous page. Piece these blocks as shown below, using (2) of the 3-1/2" x 3-1/2" white squares in the top row.

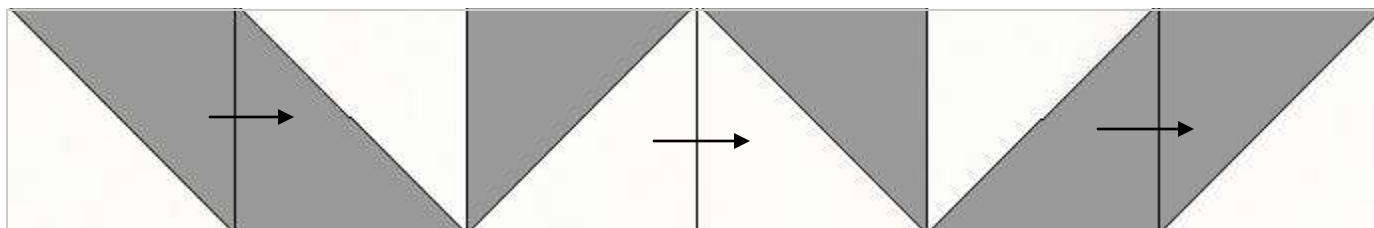
Make (2) of each row, pressing as shown by the arrow. Sew the rows as shown on reverse. When you sew the rows together, take care to press the seams in opposite directions so they just nestle at the intersection. That will help you keep the block flat. Press.



Make Two



Make Two



Make Two